

### How can you help us?

We need people with ideas to help us raise funds, plan events and organize fun-filled activities that can help increase our profile and our aim to become registered as a charity in Kent.

Why not get in touch and share with us your ideas on how to help us as patients help other patients and the doctors and nurses who care for us in Kent?

We also desperately need legacies to enable us in our fund-raising activities and to continue to help Maidstone hospital's chest-medicine department do their best for our patients in Kent.

**YOU** can make a difference!

Please contact Kent Lung Awareness on 01622 890792 or 01732 521968 for the next presentation venue and any forthcoming fund-raising events.



Kent Lung Awareness

**Contact :**

**Anne : 01622 890792**

**Dee : 01732 521968**

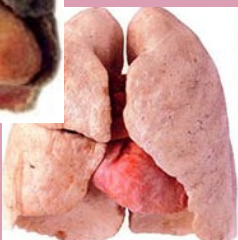
email : [kentlungawareness@gmail.com](mailto:kentlungawareness@gmail.com)

web:  
<http://kentlungawareness.weebly.com>

## Kent Lung Awareness



a patient-led support group for raising awareness for diseases of the lung, based in Kent, UK



### Who are the "Kent-Lung- Awareness" ?

We are a small group, representing and including people suffering from lung problems. We would like to repay the excellent treatment we have received from the local NHS Trust. In view of this, we are endeavouring to raise funds towards purchasing the latest, state-of-the-art equipment to help the local patients with lung problems.

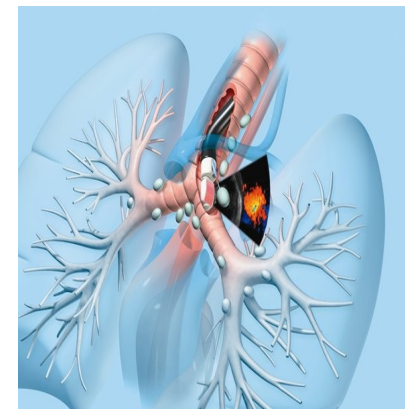
By having this equipment locally, it will greatly benefit our local patients in Kent and their carers to facilitate treatment without having to travel long distances to far-away hospitals in London as patients have done previously.

### What we have achieved so far...

We have helped raise funds in cooperation with another Kent-based charity to help Maidstone hospital to purchase and set-up key diagnostic services (called—"EBUS"), enabling doctors to view cancerous tissue via a tiny camera fitted at the end of a long tube and using advanced ultra-sound, they are able to take samples of tissues safely for diagnosis (without having to subject patients to dangerous chest-surgeries). Having these services locally enables patients to get cancers diagnosed earlier and to get them treated faster with promising results.

Before EBUS services were initiated in Maidstone	EBUS services initiated in	After EBUS services were initiated in Maidstone
41 days		12 days

Average waiting times have improved since our Kent-based charity have helped purchase the present EBUS device at Maidstone hospital, from 41 days down to 12 days.



*Drawing showing EBUS scope being passed down the windpipe into the lungs and the tiny ultrasound probe used to "see" the tumour*



The EBUS scope that is used to visualise lung cancers and to obtain biopsy samples



What doctors see down the EBUS device – and the ultrasound picture (right) showing the cancer outside-the airways.